



**Unit 28, Sturt Village  
9 Finniss Street, Marion**



ABOUT THE RETIREMENT VILLAGE

**Sturt Village offers independent living units in a welcoming and friendly community.  
A tranquil waterway weaves through the village creating a peaceful haven.**

SALES AGENT **0417 870 063** DEBBIE BENNETT

PROPERTY DETAILS

- 2 Bedroom unit · Balcony with views over gardens · Open Plan Living · Dedicated parking
- Lots of Natural light · Quality appointed unit · Friendly community of residents
- Close to Westfield Shopping Centre and public transport · Completely renovated with modern selections · Excellent storage



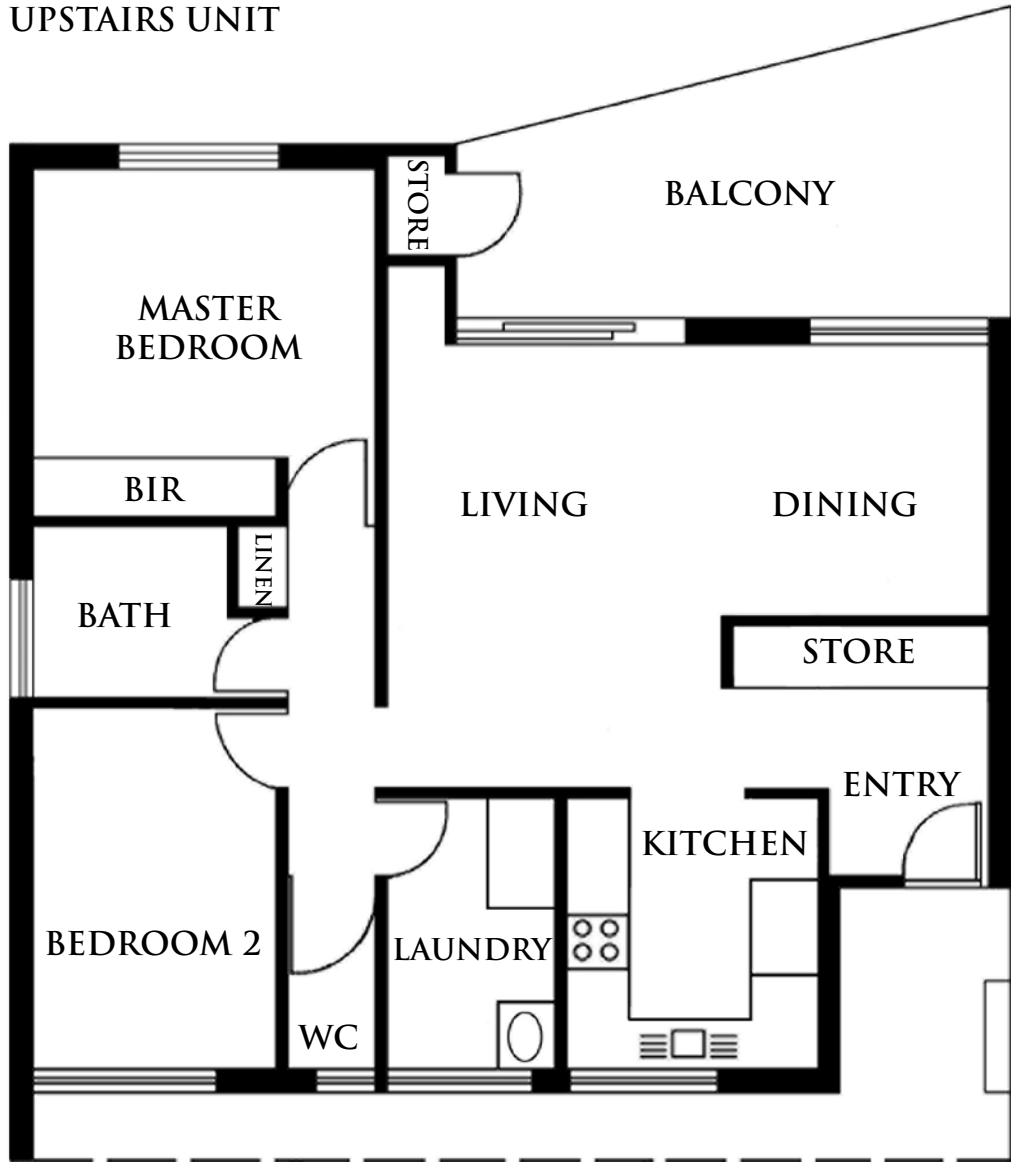
RSL CARE SA

RSL CARE SA  
55 Ferguson Avenue  
Myrtle Bank SA 5064  
Tel: 08 8379 2600  
Fax: 08 8338 2577  
www.rslcaresa.com.au

# Unit Floorplan

UNIT 28/9 FINNISS STREET, MARION

## UPSTAIRS UNIT



|                             |            |
|-----------------------------|------------|
| Dining/Living               | 3.4 x 6.2m |
| Master Bedroom              | 3.0 x 3.6m |
| Bedroom 2                   | 3.6 x 2.5m |
| Kitchen                     | 2.6 x 2.7m |
| Total approx. internal area | 64.2 sqm   |

*Measurements are approximate. Interested parties should rely on their own inquiries.*

FLOOR PLAN (NOT TO SCALE)

UNIT 28/9 FINNISS STREET, MARION





# STURT VILLAGE - SITE PLAN

MARION