



**Unit 28, Sturt Village
9 Finniss Street, Marion**



ABOUT THE RETIREMENT VILLAGE

**Sturt Village offers independent living units in a welcoming and friendly community.
A tranquil waterway weaves through the village creating a peaceful haven.**

SALES AGENT **0417 870 063** DEBBIE BENNETT

PROPERTY DETAILS

- 2 Bedroom unit · Balcony with views over gardens · Open Plan Living · Dedicated parking
- Lots of Natural light · Quality appointed unit · Friendly community of residents
- Close to Westfield Shopping Centre and public transport · Completely renovated with modern selections · Excellent storage



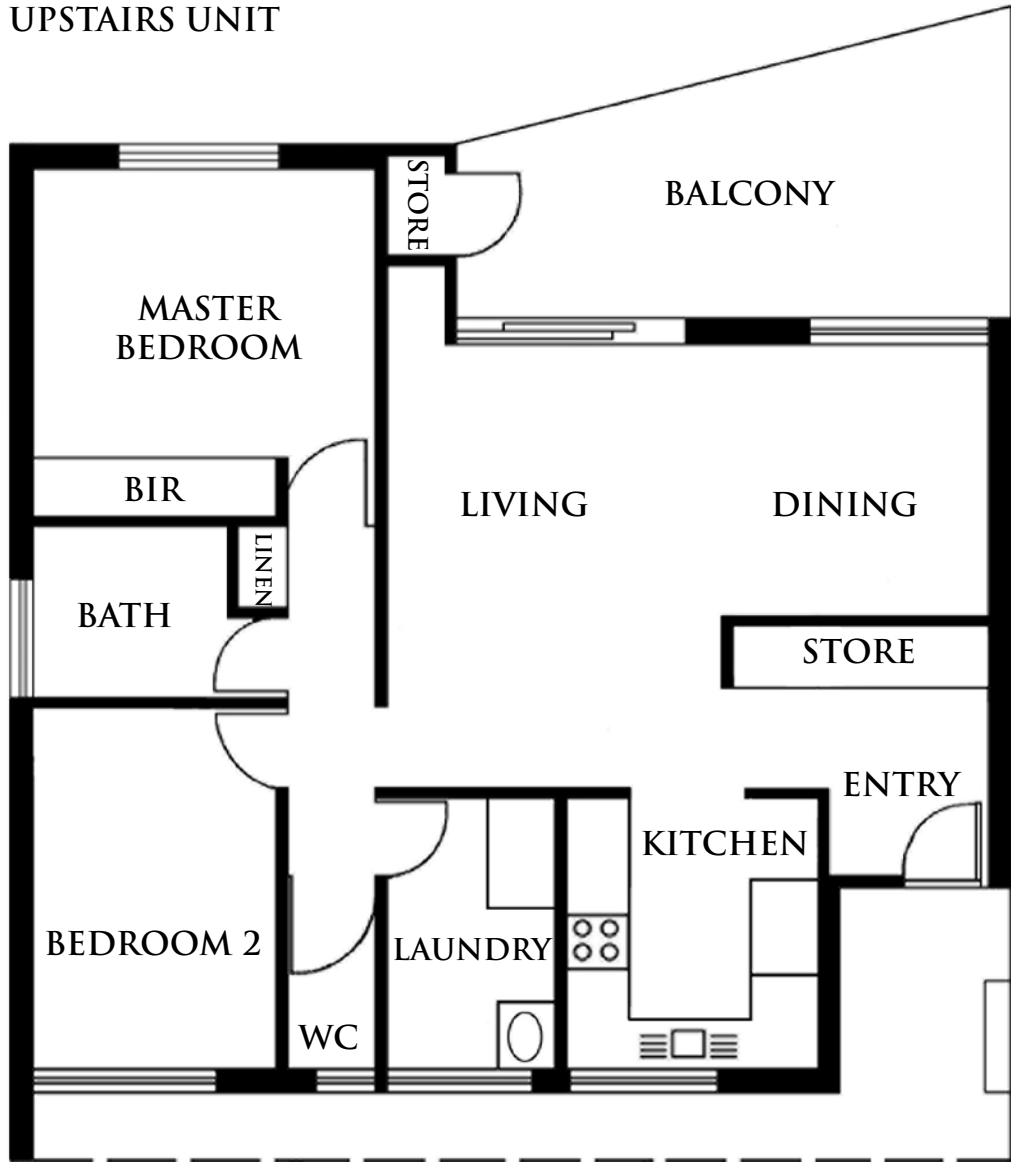
RSL CARE SA

RSL CARE SA
55 Ferguson Avenue
Myrtle Bank SA 5064
Tel: 08 8379 2600
Fax: 08 8338 2577
www.rslcaresa.com.au

Unit Floorplan

UNIT 28/9 FINNISS STREET, MARION

UPSTAIRS UNIT



Dining/Living	3.4 x 6.2m
Master Bedroom	3.0 x 3.6m
Bedroom 2	3.6 x 2.5m
Kitchen	2.6 x 2.7m
Total approx. internal area	64.2 sqm

Measurements are approximate. Interested parties should rely on their own inquiries.

FLOOR PLAN (NOT TO SCALE)

UNIT 28/9 FINNISS STREET, MARION



STURT VILLAGE - SITE PLAN

MARION